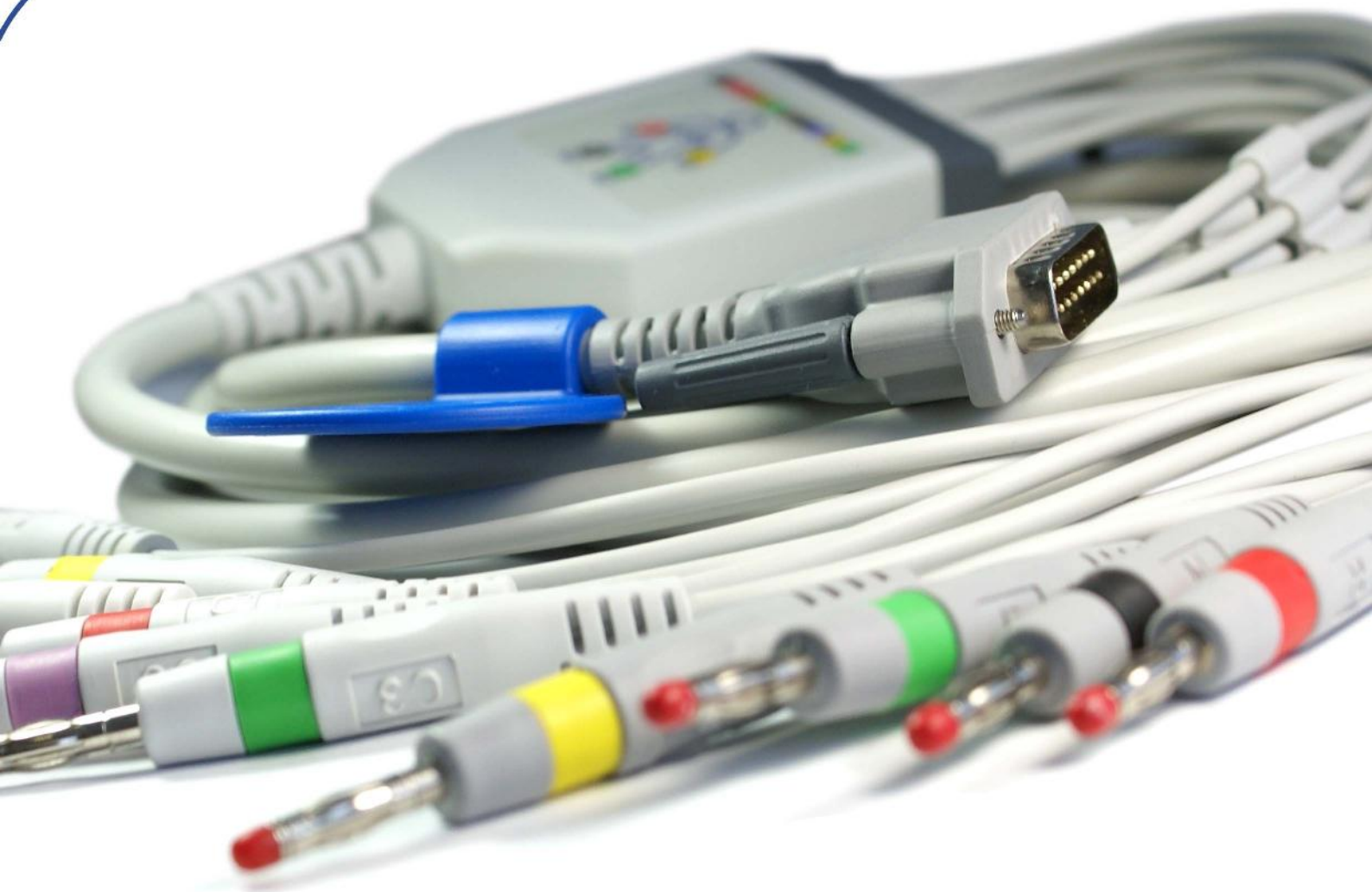


# FMT

Medical Sensors, Cables and Accessories



EN ISO  
9001:2008 / 13485:2003

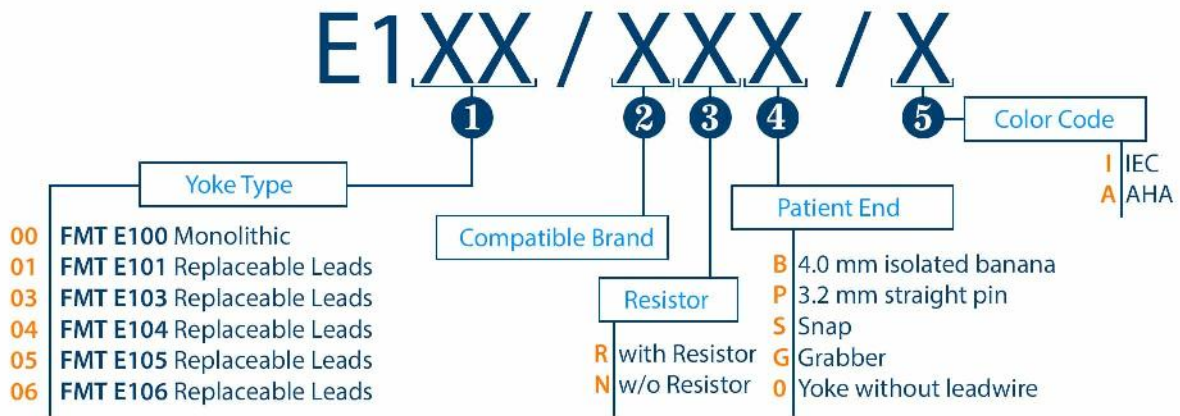
# DIAGNOSTIC EKG

*Cables & Accessories*

REV.30 0205.2016  
YMC EDITOR



# DIAGNOSTIC EKG CABLES & ACCESSORIES



To determine the part code enter specified parameter values instead of X.

FMT Diagnostic EKG cables are monolithic or with replaceable leads compatible with various yoke cable types for different EKG devices. Available options may be determined from *"Cable Yokes"* section.

Full part number is valid for yoke and grouped leads. If you would like to buy yoke without leads, just write "0" value for patient end -field 4-, after filling other sections.

You can find cables for various brands and models, resistor values in *"EKG device side connectors and compatible brands"* section.

Patient end connections can be selected from banana, straight pin, grabber or snap options. You can choose **Patient End** code and IEC or AHA color code from *"Leadwires Patient Ends"* section.

EKG Cables have 1.80 m yoke cable length (Ø7.6 mm), 80 cm chest and 100 cm extremity lead lengths (Ø3.0 mm). Other lengths are available upon request.

## Cable Yokes



- **E100 type yoke**  
One piece yoke with fixed leads.



- **E101 type yoke**  
Detachable yoke with replaceable leads.



- **E103 type yoke**  
Specially designed for replacement of GE MULTI-LINK EKG Cables.



- **E104 type yoke**  
Specially designed for replacement of GE MULTI-LINK 12 SL EKG Cables.



- **E105 type yoke**  
Compatible with new system PHILIPS cables.



- **E106 type yoke**  
Compatible with Meditronic/Physio Control cables.



# DIAGNOSTIC EKG CABLES & ACCESSORIES

## *EKG device side connectors and compatible brands*



15 pin D-sub connector with screws



E100/DN $\times$ /X  
E101/DN $\times$ /X

E100/DR $\times$ /X  
E101/DR $\times$ /X 10 k $\Omega$

**Philips/HP** M1770A(Pagewriter 200i-300i), M1771A (Pagewriter 200), M1772A (Pagewriter 100), Cable OEM M3703C. **Bionet** All Models. **BTL** All Models. **Aspel** All Models. **Innomed** All Models. **Mortara** ELI150, ELI210, ELI250, ELI350.



15 pin D-sub connector with screws



E100/SR $\times$ /X  
E101/SR $\times$ /X 10 k $\Omega$

**Schiller** AT, AT1, AT2, AT3, AT5, AT6, AT10, AT60, A104 PC, CS100, CS6, CS6/12, AT101, AT102, AT104. **Esaote** P80, P120. **Kontron** P80.



15 pin D-sub connector with screws



E100/NN $\times$ /X  
E101/NN $\times$ /X

E100/NR $\times$ /X  
E101/NR $\times$ /X 10 k $\Omega$

**Nihon Kohden** Cardiofax C6151, 6353, 8270, 8350, 8370, 8420, 8423, 8450, 8453, 8820, 8823, 8830, 9620, 9010, 9020, 9022, 9110, 9130, 9132. **Dong Jiang** All Models. **Biocare** All Models. **Cardioline** AR600, AR1200, ELAN, ELAN1100, Cardiette Excel 103, 106, 112, 212, Deadalus Models, Microruler & Autoruler Models.



15 pin D-sub connector



E100/GR $\times$ /X  
E101/GR $\times$ /X  
E103/GR $\times$ /X 10 k $\Omega$

**GE** Microsmart, MAC500 MAC1000, MAC1200ST, MAC400, MAC600, MAC800, MAC1600.



15 pin D-sub connector with screws



E100/ER $\times$ /X  
E101/ER $\times$ /X 10 k $\Omega$

**Edan** SE-1200 Express, SE-12, SE-12 Express, SE-601, SE-3, SE-1. **Mindray** DECG-03A.



16 pin circular connector



E100/CR $\times$ /X  
E101/CR $\times$ /X 4.7 k $\Omega$

**Cardioline** Delta 1, 3, 30, 60, Delta 1 plus, Delta 3 plus, Delta 60 plus. **Suzuken Kenz** 103, 106.



15 pin D-sub connector with latch on the top



E100/KR $\times$ /X  
E101/KR $\times$ /X 10 k $\Omega$

**Fukuda ME** KP-5000.



15 pin D-sub connector with 45 degree angle and locking plastic latches



E100/HR $\times$ /X  
E101/HR $\times$ /X 10 k $\Omega$

**Bosch** 603D, 603ER, 603S, 606. **Customed**, **Hellige** EK36, EK41, EK43, EK53, EK56, EK403, 413, 512, E512P, Cardiosmart, Cardiosys. **Siemens** Sicard 440/440S, 460/460S, 740, Sicard 803, Sirecust 701, Cathcor, Cardiostat 1,3T, 703, 710, Cardinex 3T, 4, 6T, 703, 710, Megacard Elema A13, R, R/E, Miracard1. **Hörmann** Bioiset9000.



15 pin D-sub connector with locking metal latches



E100/FN $\times$ /X  
E101/FN $\times$ /X

E100/FR $\times$ /X  
E101/FR $\times$ /X 10 k $\Omega$

**Fukuda Denshi** Autocardiner, Cardiomax, FX2111, FX7411, FX7402, FX7202, FX2155, FX3010, FX7102.

# DIAGNOSTIC EKG CABLES & ACCESSORIES

## *EKG device side connectors and compatible brands*



15 pin D-sub connector with locking plastic latches



E100/MRX/X  
E101/MRX/X

10 kΩ

**Mortara** ELI 50, ELI 100, ELI 200.



12 pin circular connector



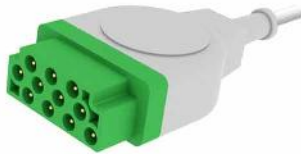
E100/LNX/X  
E101/LNX/X

-

**PETAŞ** Kardiopet 300, 500.



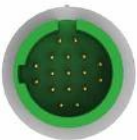
11 pin rectangular connector



E100/BNX/X  
E101/BNX/X  
E104/BNX/X

-

**GE** Solar 7000/8000/9500, DASH 2500, 3000, 4000, 5000, Eagle 500, 1000, 3000, 5000, BP30, Dinamap PRO 1000, MAC-Lab, Tram Modules.



17 pin circular connector



E100/TRX/X  
E101/TRX/X

1 kΩ

**Spacelabs** Ultraview 90496.



12 pin circular connector



E100/YRX/X  
E101/YRX/X

10 kΩ

**Fukuda Denshi** DS7300.



15 pin DB15 female connector with screws



E100/ZRX/X

10 kΩ

**TEPA** All Stress Modules.

*Only Grabber and Snap options are available.*



15 pin D-sub connector



E100/JRX/X  
E101/JRX/X

10 kΩ

**Burdick** Eclipse, 4, 8, 400, 800, LE11, 850, 8501, Eclipse Plus, ATRIA, ATRIA PLUS, ATRIA 3000.



15 pin D-sub connector with screws



E100/ARX/X  
E101/ARX/X

4.7 kΩ

**Trismed** All Models.



15 pin D-sub connector with screws



E100/ONX/X  
E101/ONX/X

-

**Carewell** ECG1101, 1103, 1106, 1112, T10, T12.



# DIAGNOSTIC EKG CABLES & ACCESSORIES

*EKG device side connectors and compatible brands*



12 pin circular connector



E100/RRX/X 10 kΩ  
E106/RRX/X

Medtronic Physio Control Lifepak 12/20.  
*Only Grabber and Snap options are available.*



12 pin circular connector



E100/PRX/X 1-3.2 kΩ  
E105/PRX/X

Philips / HP M1949A.  
*Only Grabber and Snap options are available.*



12 pin circular connector



E100/IRX/X 10 kΩ

Progetti Rescue Life Defibrillator.  
*Only Grabber and Snap options are available.*



15 pin connector



E100/WRX/X 10 kΩ

Zoll M Series.  
*Only Grabber and Snap options are available.*



12 pin rectangular connector



E100/QNX/X -

Nihon Kohden TEC-8300K Series Defibrillator.  
*Only Grabber and Snap options are available.*



13 pin circular connector

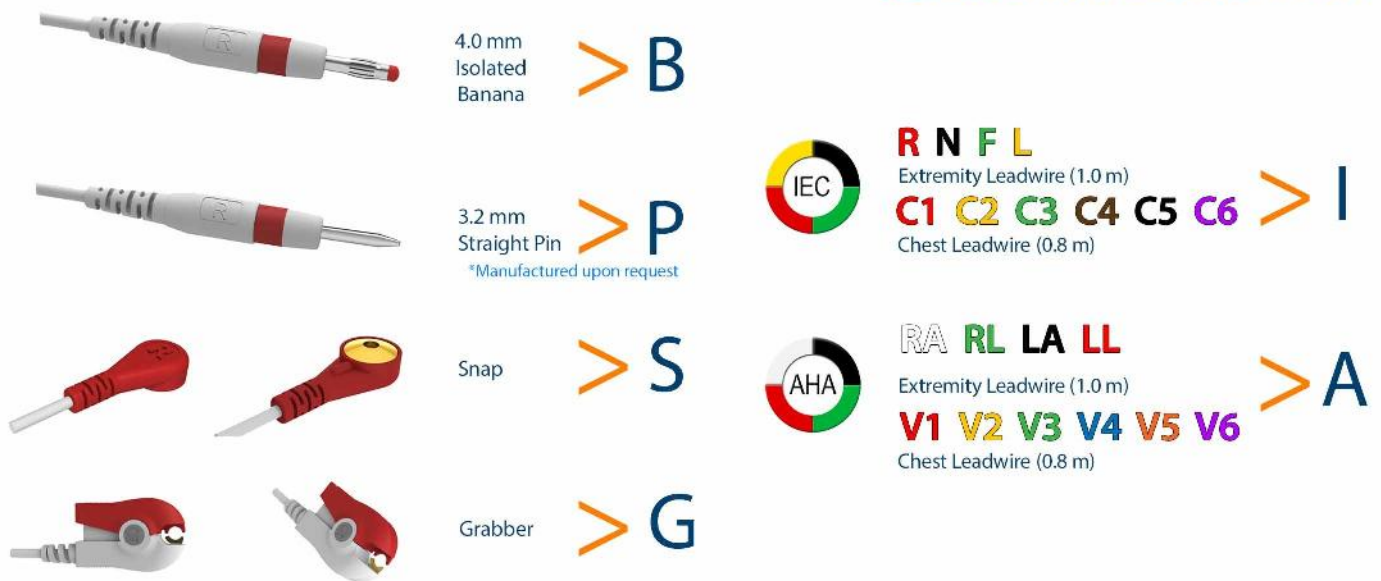


E100/VRX/X 1 kΩ

Metrax Primedic Defimonitor EVO,  
Mediana D500.  
*Only Grabber and Snap options are available.*

# DIAGNOSTIC EKG CABLES & ACCESSORIES

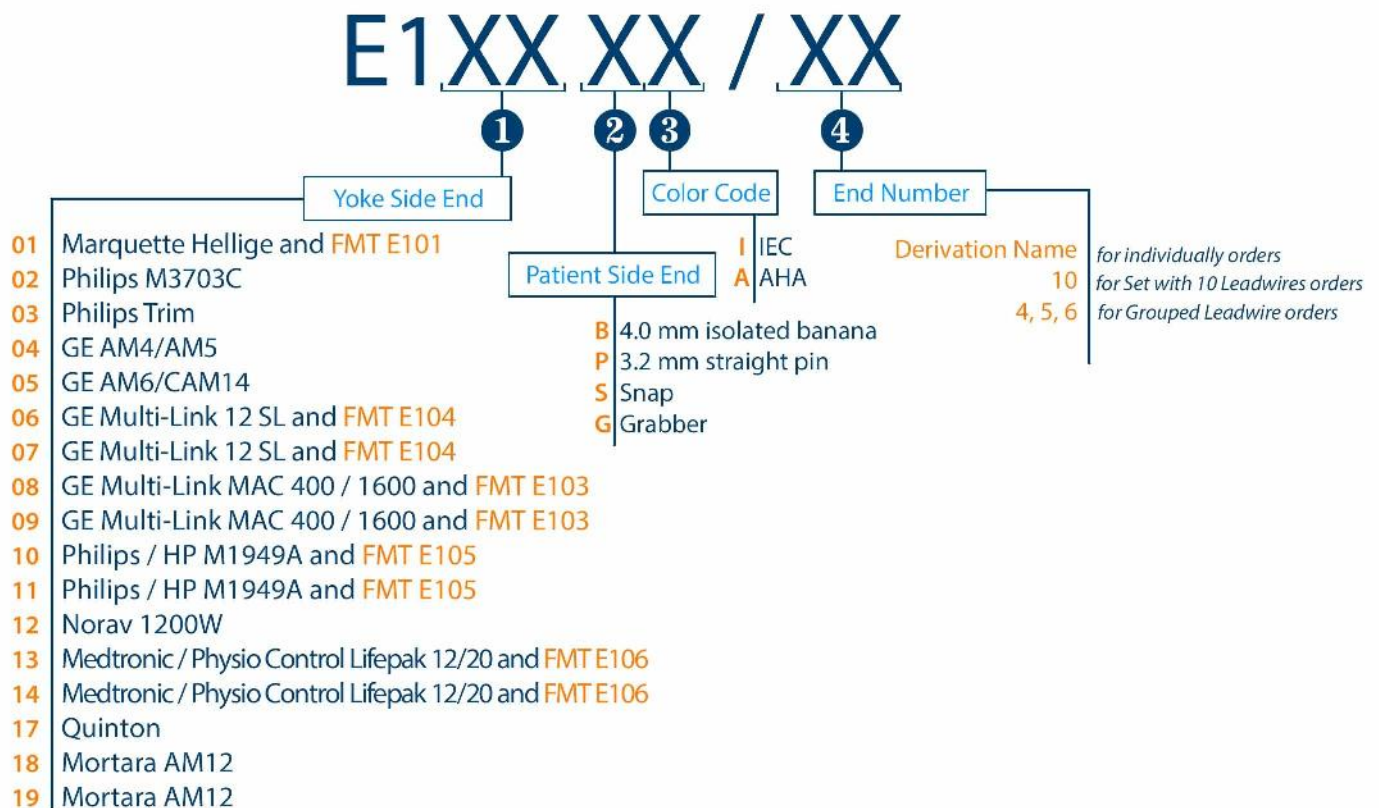
## Leadwires Patient Ends



- "B" for 4.0 mm isolated banana, "P" for 3.2 mm straight pin, "S" for snap, "G" for grabber, "I" for IEC color coding, "A" for AHA color coding.

## Replacement Leadwires

- Replacement Leadwires are available for purchase separately. You can determine the part number using the below table to order individually or as a set. For individual order for Leadwires, enter derivation name instead of XX at field 4 (Example: E101BI/C6). If you're going to order Leadwires for replacement 10 pcs as a set, enter 10 instead of XX at field 4 (Example: E101BI/10). Some Leadwire sets grouped as 4, 5 or 6 pcs. For ordering grouped leadwires enter number of grouped leadwires instead of XX at field 4 (Example: E110GI/5).



# DIAGNOSTIC EKG CABLES & ACCESSORIES

## Replacement Leadwires

Cable Yoke Side

Patient Connection Side



- **E101XX/X** Leadwire for Marquette Hellige and FMT E101 cable yoke.

Example: E101BI/R leadwire with banana end, IEC color code, R



- **E102XX/X** Leadwire for Philips M3703C EKG Module.

Example: E102BI/R leadwire with banana end, IEC color code, R



- **E103XX/X** Leadwire for Philips Trim EKG Module.

Example: E103BI/R leadwire with banana end, IEC color code, R



- **E104XX/X** Leadwire for GE AM4/AM5 EKG Module.

Example: E104BI/R leadwire with banana end, IEC color code, R



- **E105XX/X** Leadwire for GE AM6/CAM14 module and FMT E103 cable yoke.

Example: E105BI/R leadwire with banana end, IEC color code, R



- **E106XX/5** Grouped Leadwire for GE Multi-Link 12 SL and FMT E104 cable yoke.

Example: E106SI/5 Leadwire set with 5 snap end, IEC color code, (N,R,L,F,C)



- **E107XX/5** Grouped Leadwire for GE Multi-Link 12 SL and FMT E104 cable yoke.

Example: E107SI/5 Leadwire set with 5 snap end, IEC color code, (C2, C3, C4, C5, C6)



# DIAGNOSTIC EKG CABLES & ACCESSORIES

## Replacement Leadwires

Cable Yoke Side

Patient Connection Side



**E108XX/5** Grouped Leadwire for **GE** Multi-Link MAC 400 / 1600 and **FMT E103** cable yoke.

Example: E108SI/5 leadwire set with 5 snap end, IEC color code, (N,R,C1,C2,C3)



**E109XX/5** Grouped Leadwire for **GE** Multi-Link MAC 400 / 1600 and **FMT E103** cable yoke.

Example: E109SI/5 leadwire set with 5 snap end, IEC color code (C4, C5, C6, L, F)



**E110XX/5** Grouped Leadwire for **Philips/HP** M1949A and **FMT E105** cable yoke.

Example: E110SI/5 leadwire set with 5 snap end, IEC color code (C1, R, F, L, N)



**E111XX/5** Grouped Leadwire for **Philips/HP** M1949A and **FMT E105** cable yoke.

Example: E111SI/5 leadwire set with 5 snap end, IEC color code (C6, C5, C4, C3, C2)



**E112XX/X** Leadwire for **Norav** 1200W Module.

Example: E112BI/R leadwire with banana end, IEC color code, R



**E113XX/4** Grouped Leadwire for **Medtronic / Physio Control** Lifepak 12/20 and **FMT E106** cable yoke.

Example: E113GI/4 leadwire set with 4 grabber end, IEC color code (N, R, L, F)



**E114XX/6** Grouped Leadwire for **Medtronic / Physio Control** Lifepak 12/20 and **FMT E106** cable yoke.

Example: E114GI/6 leadwire set with 6 grabber end, IEC color code (C1, C2, C3, C4, C5, C6)



# DIAGNOSTIC EKG CABLES & ACCESSORIES

## Replacement Leadwires

Cable Yoke Side

Patient Connection Side



**E117XX/X** Leadwire for **Quinton** stress test module.  
*Only Grabber and Snap options are available.*

Example: E117GI/R leadwire with grabber end,  
IEC color code, R



**E118XX/5** Leadwire for **Mortara** AM12 & WAM EKG module.  
*Only Banana option is available.*

Example: E118BI/5 leadwire with banana end,  
IEC color code, (N, R, C1, C2, C3)



**E119XX/5** Leadwire for **Mortara** AM12 & WAM EKG module.  
*Only Banana option is available.*

Example: E118BI/5 leadwire with banana end,  
IEC color code, (C4, C5, C6, L, F)

# DIAGNOSTIC EKG CABLES & ACCESSORIES

## Accessories

### Clamp Electrodes

- Universal connection is suitable for use with 3.2 mm straight pin, 4.0 mm banana or snap lead termination leadwires.
- All of the metallic surfaces are Silver–Silver Chloride (Ag/AgCl) plated to provide maximum signal quality.
- Color coded IEC or AHA protocols.
- The lengths of clamp electrodes are 140 mm for adult size, 89 mm for pediatric size.
- Supplied in package of 4 pieces set.

Adult	IEC	CEA11	Package 4 pcs./set, Red, Green, Yellow, Black
Adult	AHA	CEAA1	Package 4 pcs./set, Red, Green, White, Black
Pediatric	IEC	CEA12	Package 4 pcs./set, Red, Green, Yellow, Black
Pediatric	AHA	CEAA2	Package 4 pcs./set, Red, Green, White, Black



### Suction Chest Electrode

- Suction chest electrodes with universal connection, are suitable for use with 3.2 mm straight pin, 4.0 mm banana or snap lead termination leadwires.
- All of the metallic surfaces are Silver–Silver Chloride (Ag/AgCl) plated to provide maximum signal quality.
- The outer diameter of adult suction bowl is 24.0 mm. The outer diameter of the rubber bulb is 30.0 mm. The outer diameter of pediatric suction bowl is 17.2 mm. The outer diameter of the rubber bulb is 21.4 mm.
- Supplied in package of 6 pieces set.

Adult	SE1	Package 6 pcs./set
Pediatric	SE2	Package 6 pcs./set



### Banana to Snap Adaptor

- Banana to Snap Adaptors allows you to easily connect 3.2 mm straight pin and 4.0 mm banana plug leadwires to disposable ECG electrodes with 4.0 mm snap studs.
- Banana to Snap Adaptors supplied in package of 10 pieces set.



- **BS3** 3.2 mm straight pin to snap adaptor, Grey, Package 10 pcs./set
- **BS4** 4.0 mm banana to snap adaptor, White, Package 10 pcs./set

### Banana to Alligator Clip Adaptor

- Allows you to easily connect 4.0 mm banana plug leadwires to disposable ECG electrodes with tab connectors.
- Supplied in package of 10 pieces set.

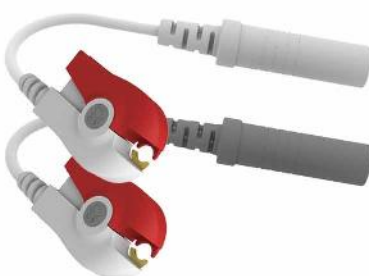
**BA4** 4.0 mm banana to alligator adaptor, 10 pcs./set



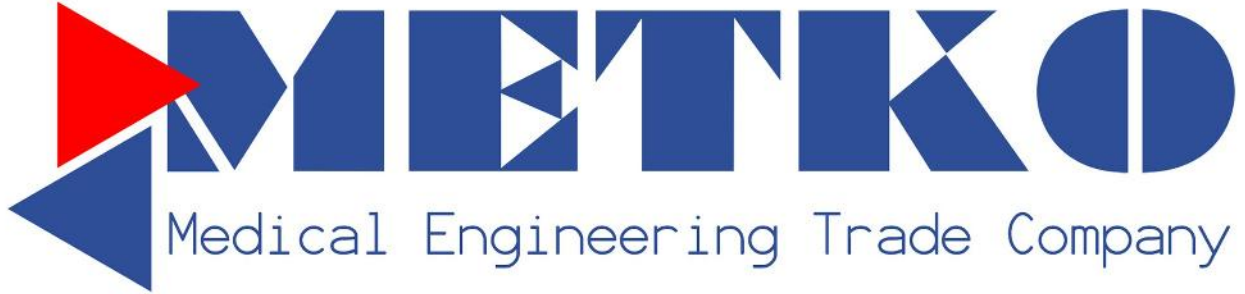
### Banana to Grabber Adaptor

- Converts 3.2 mm straight pin and 4.0 mm banana plug leadwires to disposable ECG electrodes with 4.0 mm snap studs.
- Supplied in package of 10 pieces set.

<b>BG3I/10</b>	3.2 mm straight pin to grabber adaptor, Grey, IEC color code, Package	10 pcs./set
<b>BG3A/10</b>	3.2 mm straight pin to grabber adaptor, Grey, AHA color code, Package	10 pcs./set
<b>BG4 I/10</b>	4.0 mm banana to grabber adaptor, White, IEC color code, Package	10 pcs./set
<b>BG4A/10</b>	4.0 mm banana to grabber adaptor, White, AHA color code, Package	10 pcs./set







**Exclusively Distributed By:**



**Saudi Arabia Contact:**

ENG. BENJAMIN TED A. SY  
Mobile No.: (+966) 55 904 4546  
Email Add.: ymc@yalate.com



**Metko Medikal ve Tıbbi Cihazlar Dış Ticaret Ltd. Şti.**

**Headquarter & Factory**

İvedik O.S.B. Ağaç İşleri Sanayi Sit. 1354. Cad. 1358.Sok. No:9 06378 Yenimahalle **Ankara / TÜRKİYE**  
Tel (pbx) : +90 312 387 12 46 Fax : +90 312 387 12 51

**Branch**

Atatürk Mah. Sedef Cad. 38 Ada Ata Plaza 3-5 Blokları Kat:2 No:57 34758 Ataşehir **İstanbul / TÜRKİYE**  
Tel (pbx) : +90 216 455 91 21 Fax : +90 216 455 48 24